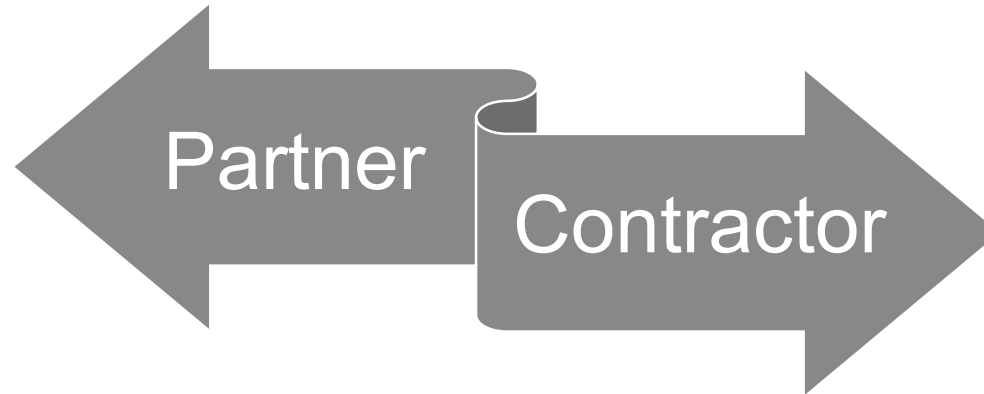


# Working with Justice-Involved Medicaid Members

---

March 11, 2022



Administrative Services Organization (ASO)



- Financial Services
  - Member Management
  - Grievances & Appeals
  - PCMP and Health Neighborhood Network Management (contracting, admin and p4p payments, performance management, training and recruiting)
  - **Population Health Management**
- Specialty BH Network
  - Utilization Management
  - Quality Management
  - Claims,
  - Compliance
  - Data Analytics
  - Reporting
  - Clinical Call Center
  - Care Coordination Contract Administration

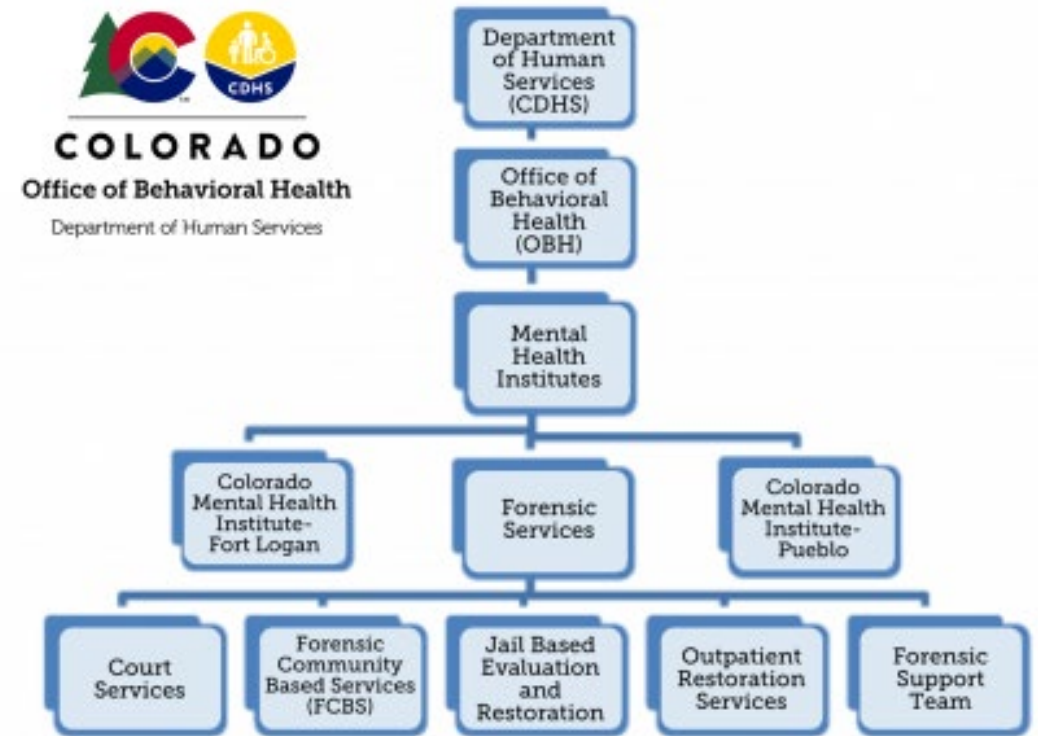
Chapter

# 1

# Office of Behavioral Health Forensic Programs

# Office of Behavioral Health Forensic Services

- Forensic Services consists of five departments: Court Services, Forensic Community Based Services (FCBS), Jail Based Evaluation and Restoration, Forensic Support Team, and Outpatient Restoration Services. These departments are responsible for coordinating, managing and responding to court orders for forensic evaluation and related forensic services statewide.



**Forensic Support Team**

**Court Services**

**Forensic Community Based Services**

**Jail Based Evaluation and Restoration**

**Out Patient Restoration**

**Office Of Behavioral Health**

# Care Coordination- Population Health- Justice Involved

Beacon

➤ ICM- In-Reach



Health Colorado

➤ Accountable entities



North East Health Partners

➤ NCHA



Chapter

# 2

# Colorado Judicial Districts



# County Sheriffs of Colorado (CSOC)

## President

Sheriff Anthony Mazzola  
Rio Blanco County

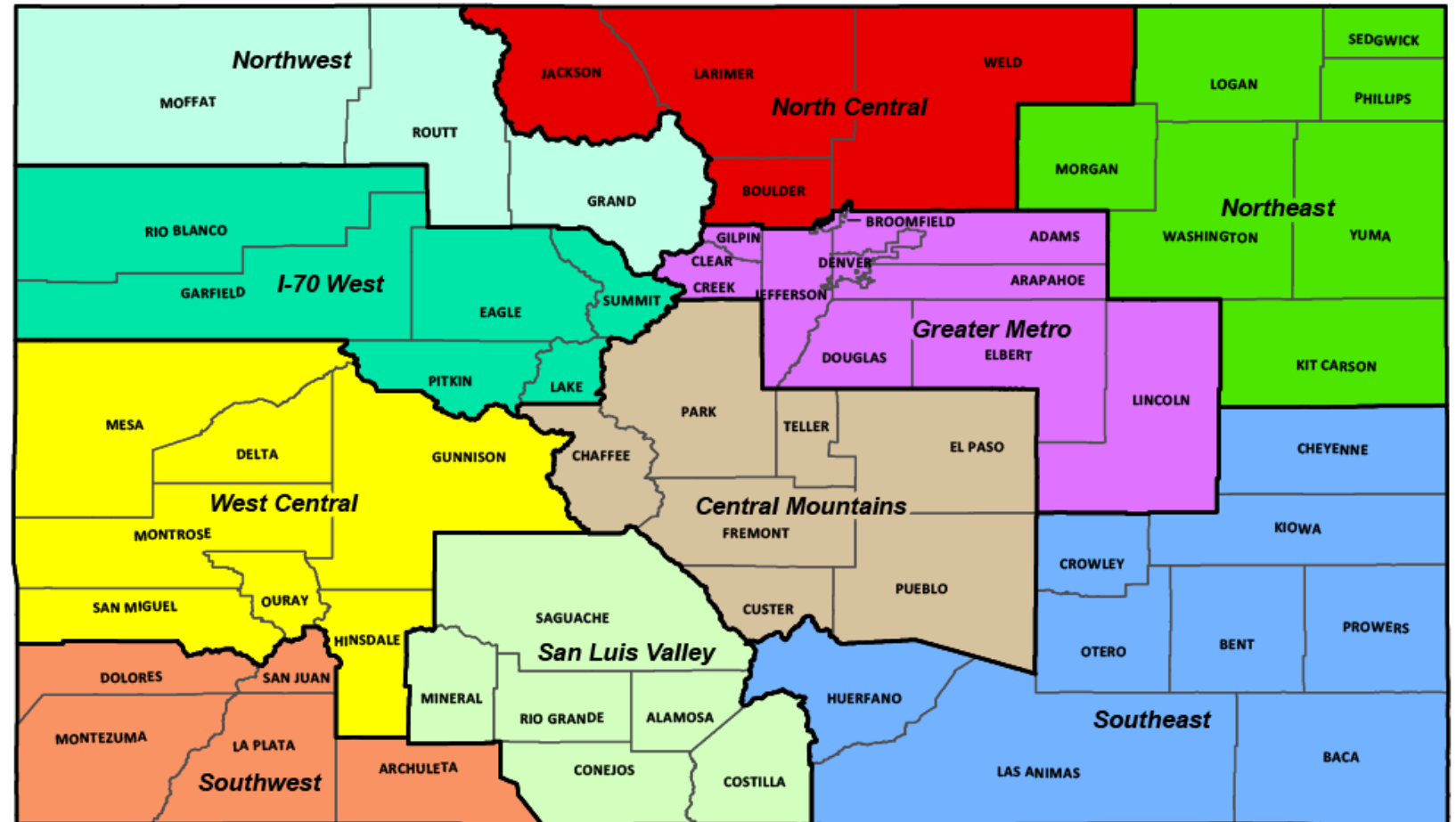
## 1st Vice President

Sheriff Shannon Byerly  
Custer County



## 2nd Vice President

Sheriff James Van Beek  
Eagle County



# Medicaid Suspension Upon Incarceration

SB08-006

Suspend Medicaid For Confined Persons

[HCPF Agency Letter 14-006](#)

Medical Member's Eligibility While  
Incarcerated

[HCPF Agency Letter 14-011](#)

Medicaid Billing Policy

[HCPF Final Memo](#)

Medicaid FAQ's for Sheriff's

[Jail Based Behavioral Health Services](#)



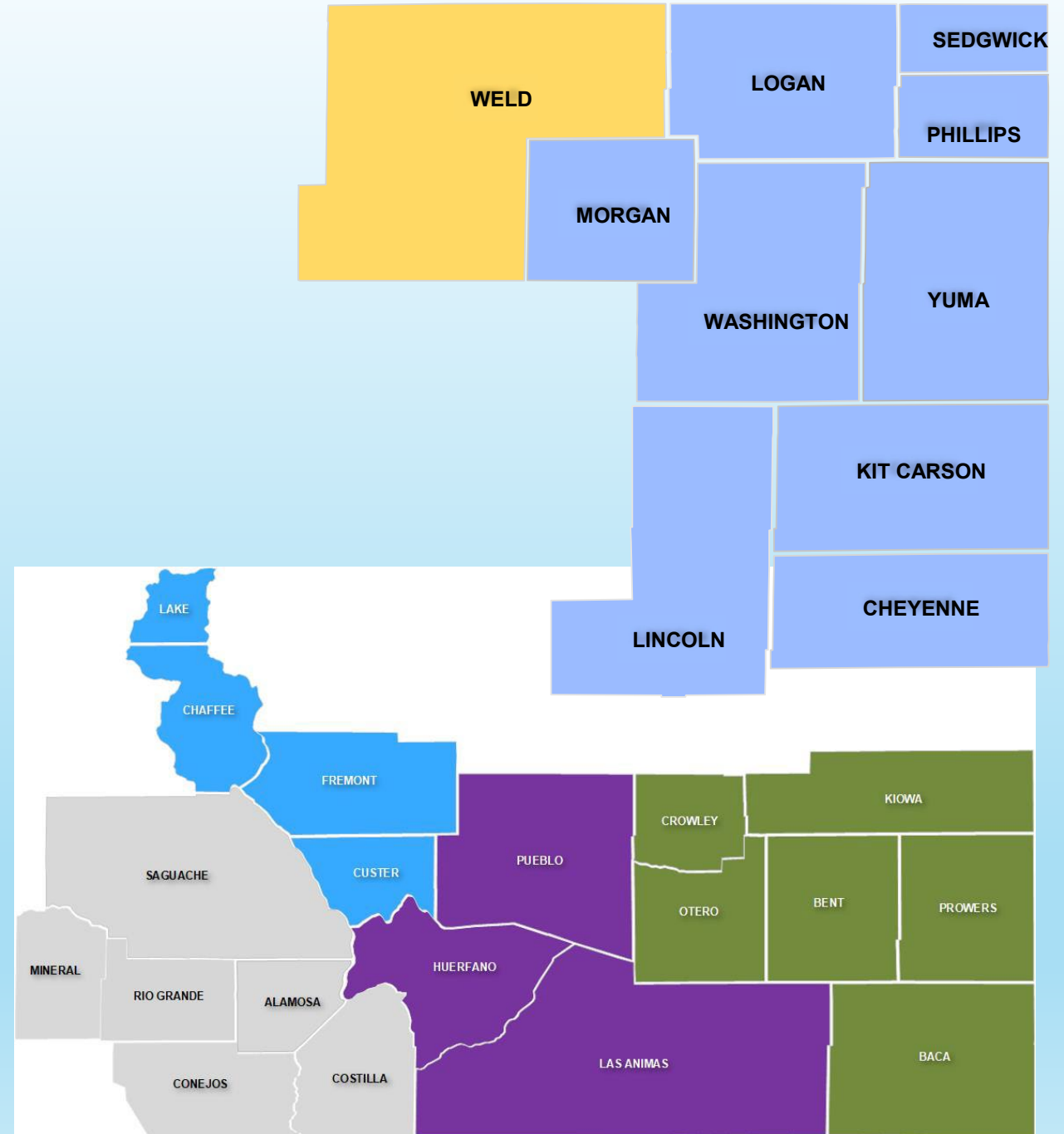
## Booking

- Medicaid Suspended
- If Transferred Medicaid Suspended
- Medicaid reinstated upon release



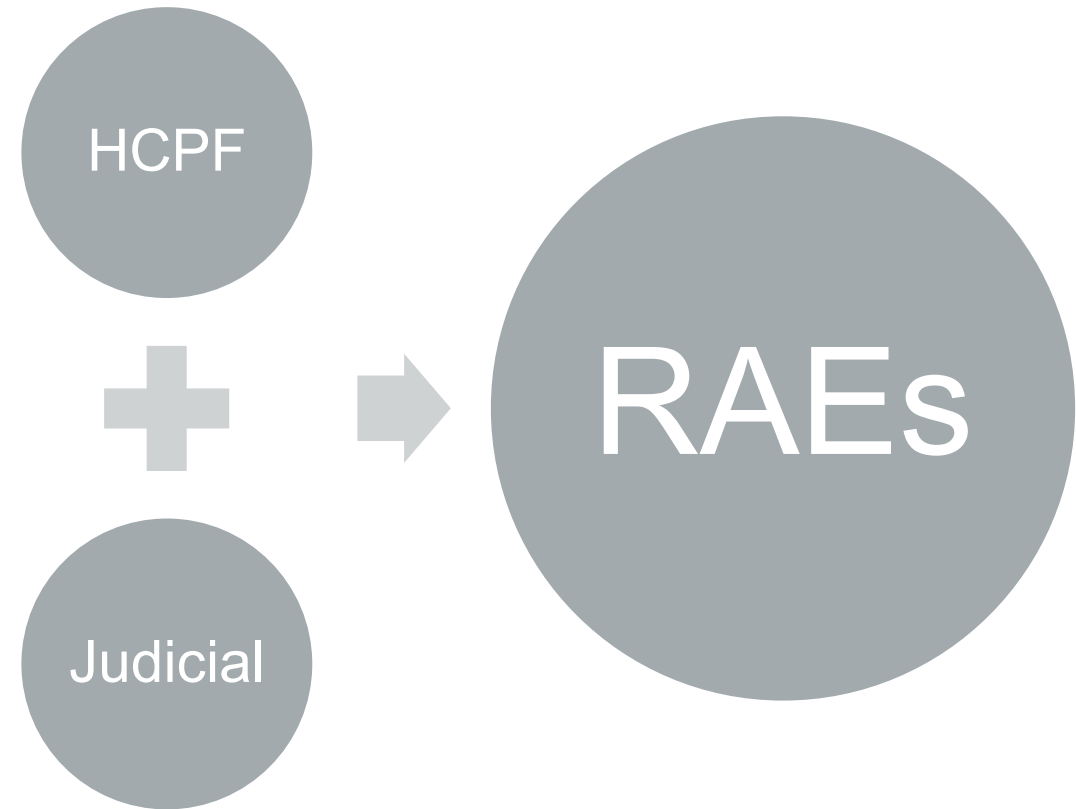
## Release

- Medicaid member report release to DHS/DSS
- Medicaid reinstatement has to be office where application was generated not county of incarceration



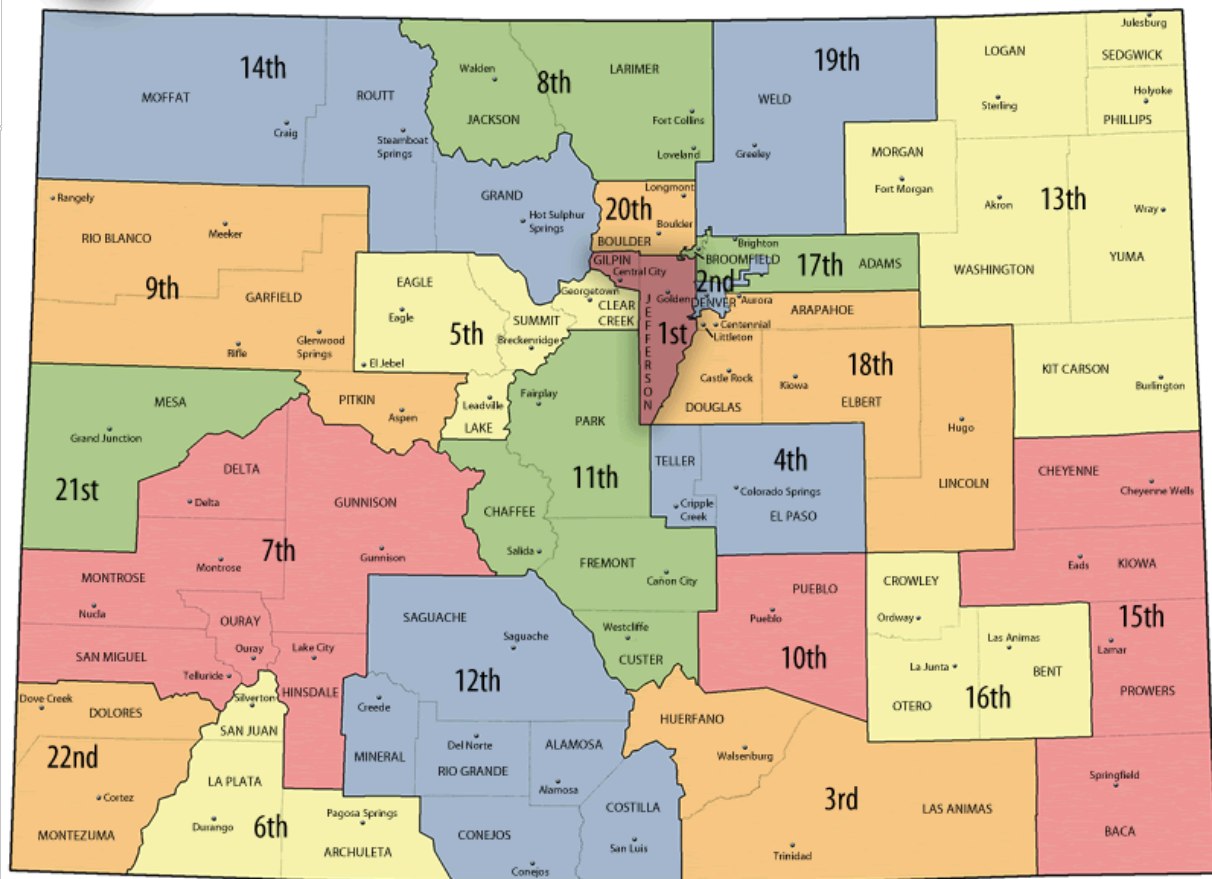
# Colorado Judicial Districts- Probation

## Data Sharing Agreement





# COLORADO JUDICIAL DISTRICTS



Judicial District	
19th	
13th	
18th	CCHA; COA
15th	

# North East Health Partners- Behavioral Health Expansion

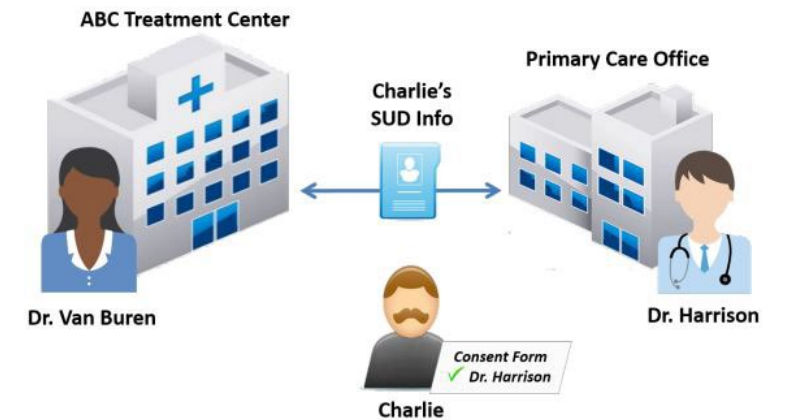
- Medical Home



- Behavioral Health

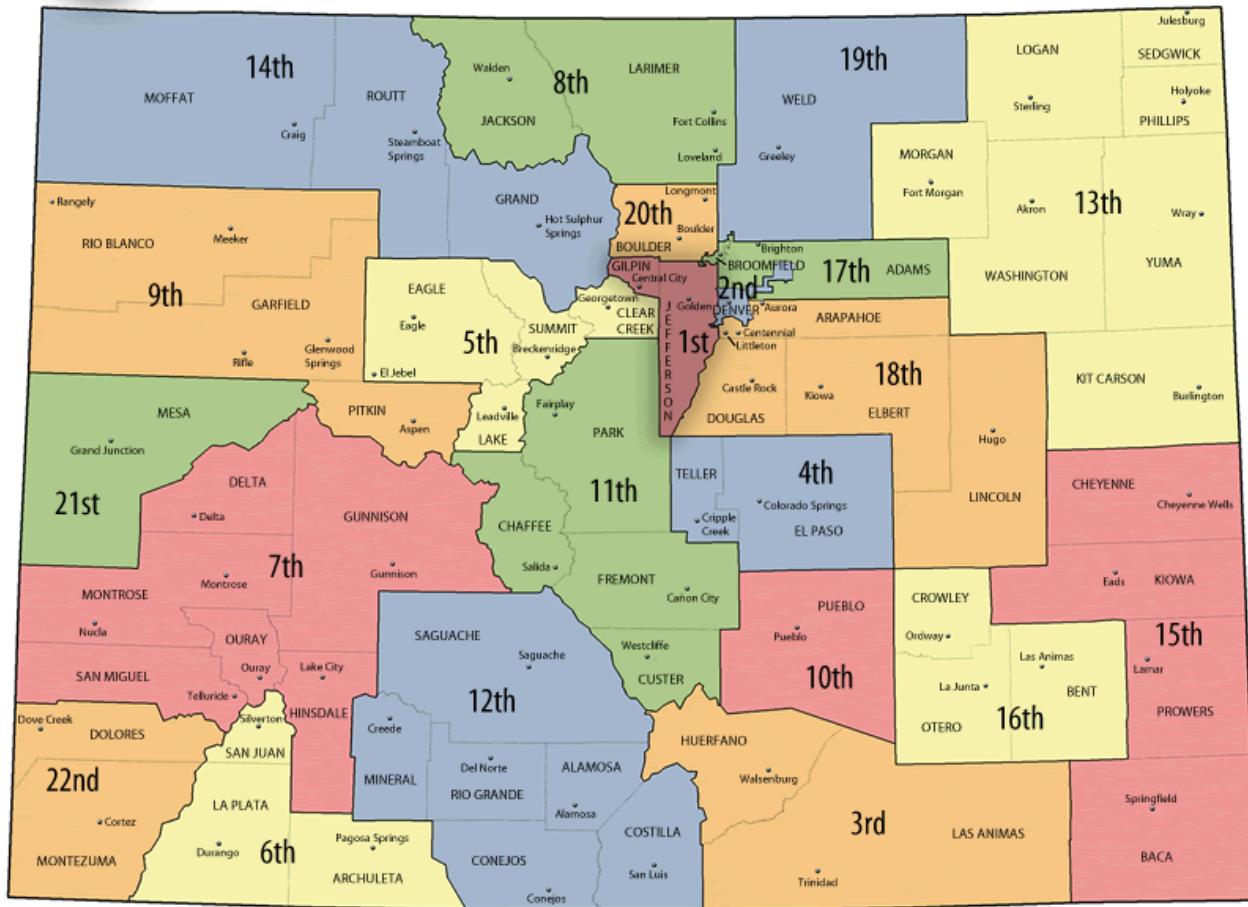


- Substance Abuse





# COLORADO JUDICIAL DISTRICTS



Judicial District	Health Colorado
12 <sup>th</sup>	
3 <sup>rd</sup>	
10 <sup>th</sup>	
16 <sup>th</sup>	
15 <sup>th</sup>	
11 <sup>th</sup>	
5 <sup>th</sup> Lake only	CCHA



# Health Colorado Inc.- Behavioral Health Expansion

- Medical Home



- Behavioral Health



- Substance Abuse





# Community Corrections

What is Community Corrections: An alternative to incarceration, for felony offenders. Community Corrections combines residential supervision and treatment for individuals not eligible for probation supervision or for those that have spent time in prison and are awaiting paroled placement

How does some one get referred to Community Corrections: referrals for placements are done by State District Courts or by the CDOC. Court Placements a.k.a Diversion cases. CDOC placements a.k.a. Transition cases.

Once referrals are made the local community corrections board will accept or deny placement. Then the local community corrections facility will accept or deny the referral. If accepted movement of individual is dependent of open bed

Difference in parole, probation, and being in Community Corrections:

1. Probationers and parolees live at home rather than in a community corrections facility.
2. Probationers and parolees must check in with their local probation/parole offices
3. Community Correction residents live in a facility monitored 24/7 and are assigned case managers.

Chapter

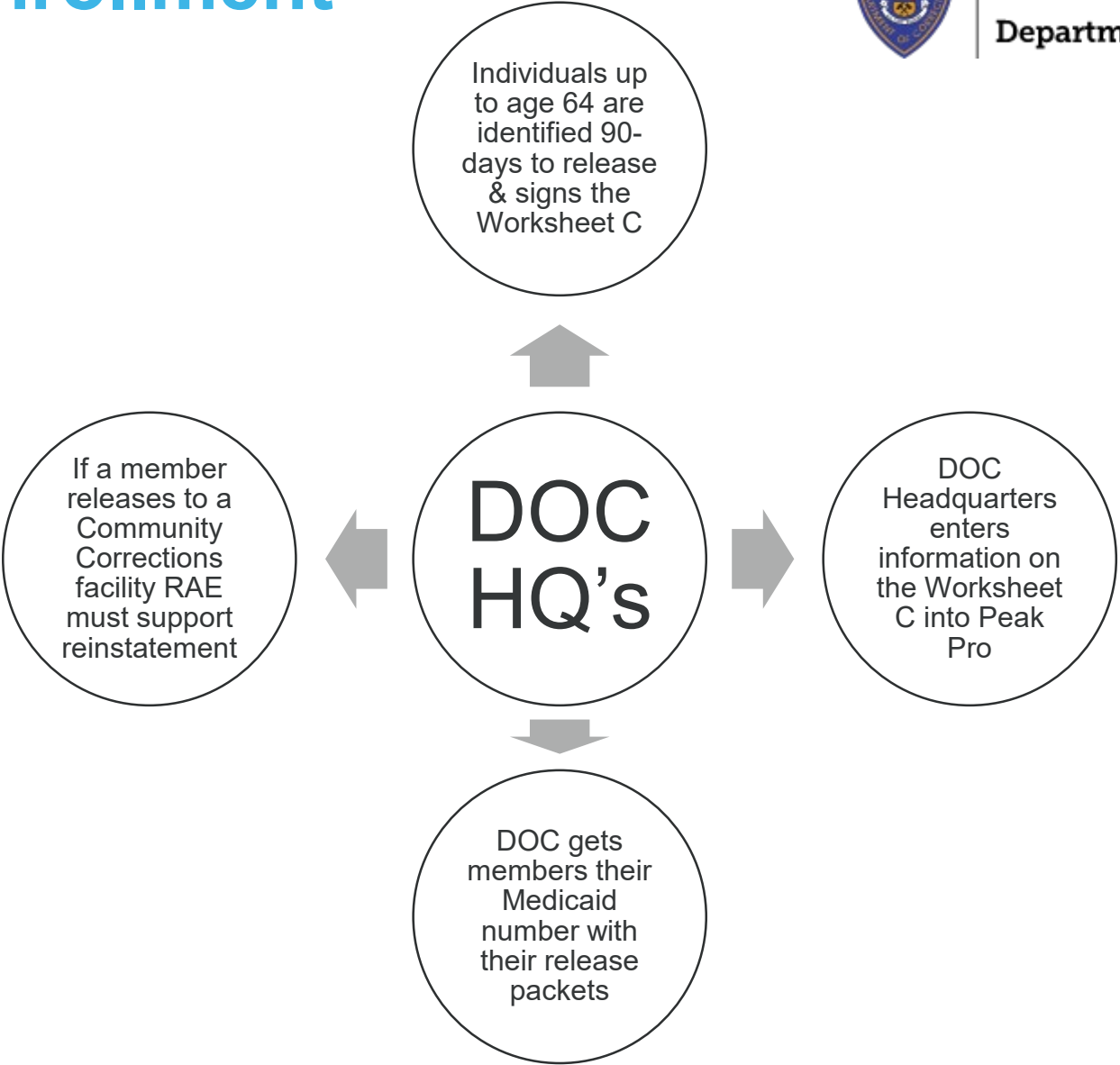
# 3

## Colorado Department of Corrections

# Medicaid Enrollment

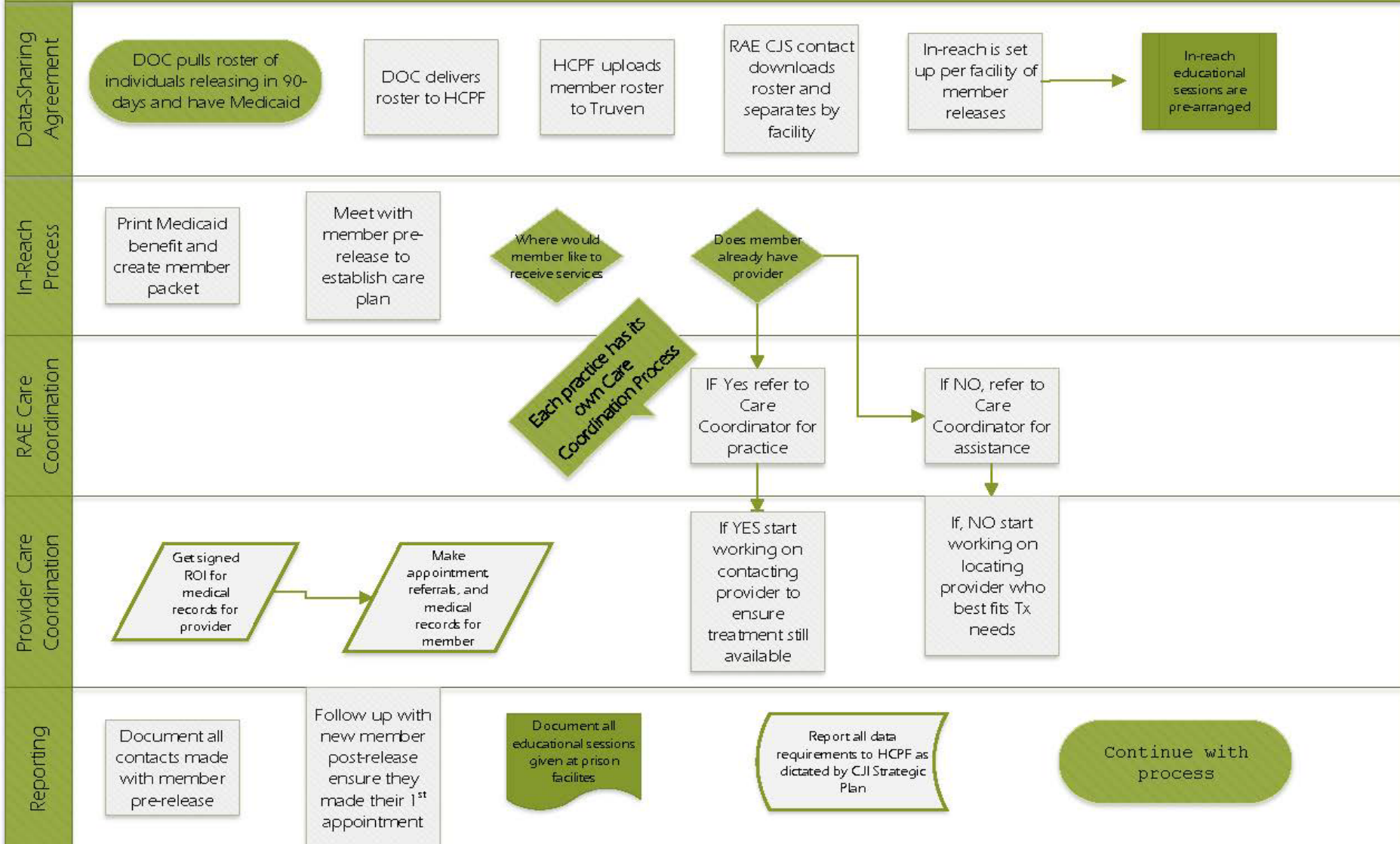


**COLORADO**  
Department of Corrections



# Transitions Referral Pre-Release (DOC)

Monthly



# Sensitizing Providers to the Effects of Incarceration on Treatment and Risk Management (SPECTRM)

## Inmate Code

- Do your own time
- Don't be a snitch/rat
- Don't trust anyone
- Respect
- Strength and Weakness
- Fear and Vigilance
- Freedom Limited
- Extortion, Gambling, Drug Trafficking and Use
- Transiency
- Lack of Privacy

## Behavior's in Therapeutic Setting

- Lack of treatment involvement
- Don't talk to staff
- Don't engage with staff or other patients
- Violent or threatening behaviors
- Medication refusal, Violent or threatening behaviors
- I did my tom, Hospital or Prison
- Treating the hospital or residence program as an extension of prison: e.g. trading of goods
- Lack of treatment involvement does not engage with staff or other clients
- No eye contact; strict demands regarding personal space

# Division of Parole

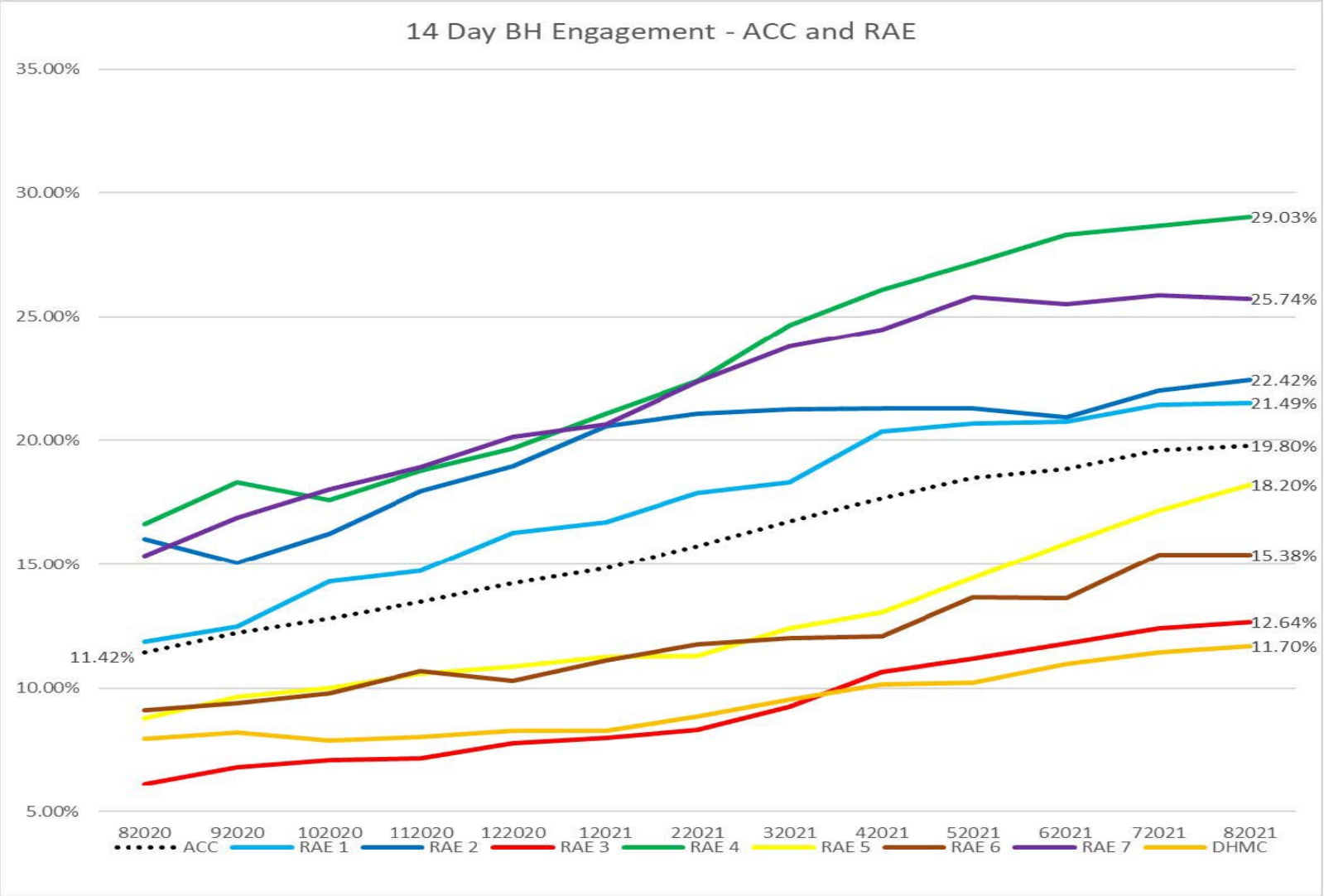


The **Treatment Coordination Case Managers (TCCM)** are staff within the Approved Treatment Provider (ATP) Client Choice Program in the Division of Adult Parole. As part of the transition from the former TASC contract, the Division reallocated these positions to take on the important work of continuity of care between facility to community for releasing individuals needing treatment services.

## [SB21-146](#) Improve Prison Release Outcomes:

Concerning measures to improve prison release outcomes, and, in connection therewith, making and reducing an appropriation.

- The act requires the DOC to ensure that any inmate who is 65 years of age or older and is being released from prison is enrolled in Medicare or health insurance if the offender would not be covered by another health insurance policy prior to release or upon release, whichever will offer more immediate and comprehensive health-care coverage. The DOC shall pay any insurance premiums and penalties for up to 6 months from the start of coverage.



# Summary

Medicaid is partner in but does not provide funding for Forensic services

Medicaid is encouraged as primary biller for our members under probation supervision and services meet Medical necessity

Collaborative effort with Department of Corrections to capture members pre-release to increase successful transition back to communities

Beacon always looking for opportunities to enhance our provider network able to work with our justice-involved members



# Thank You

---

Tina Gonzales, Health Promotion  
[Tina.gonzales@beaconhealthoptions.com](mailto:Tina.gonzales@beaconhealthoptions.com)  
719-367-1796